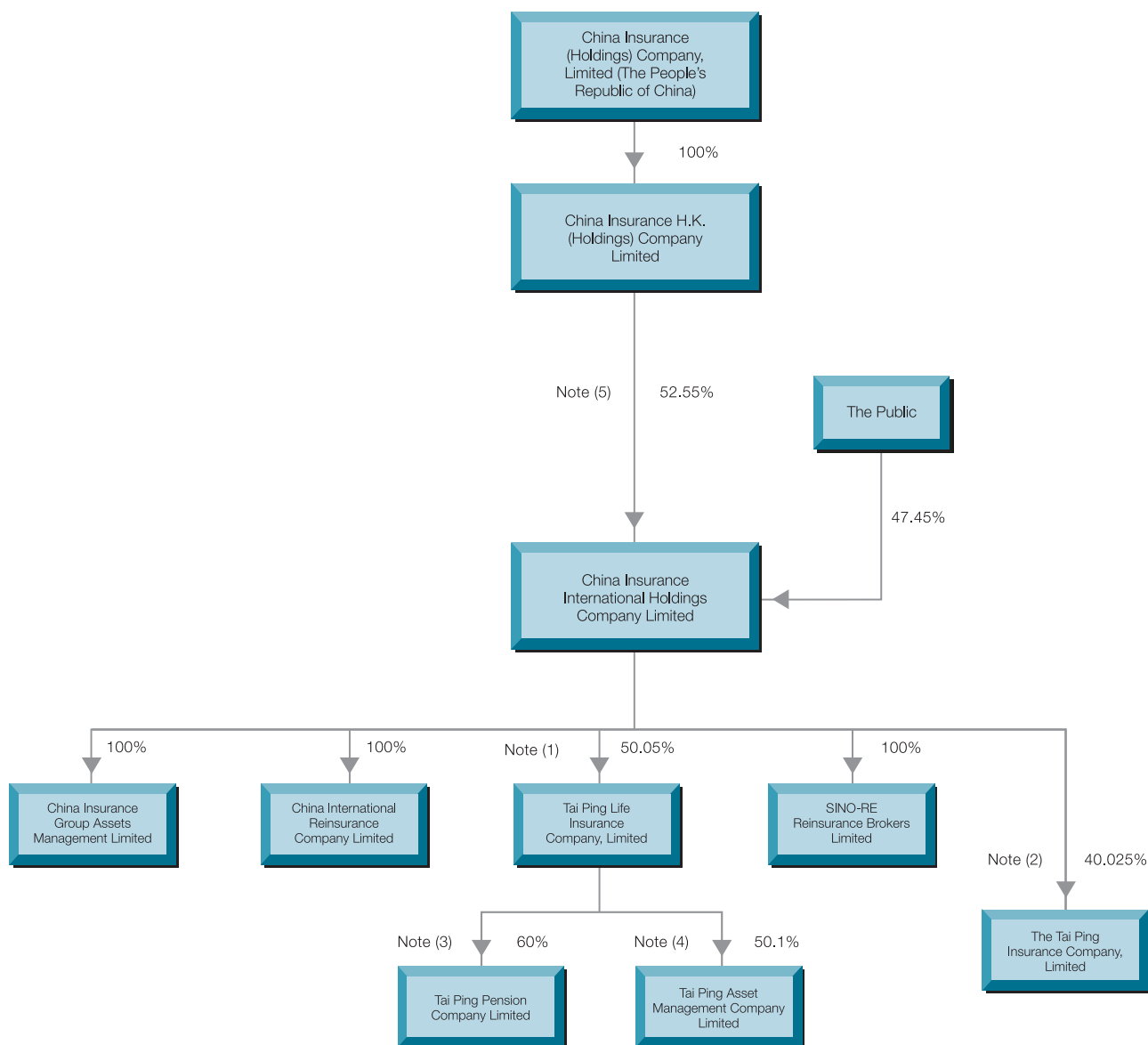


# CORPORATE STRUCTURE



Note (1): CIHC and Fortis own the remaining 25.05% and 24.90% equity interests in TPL, respectively.

Note (2): CIHC and ICBC (Asia) own the remaining 50.398% and 9.577% equity interests in TPI, respectively.

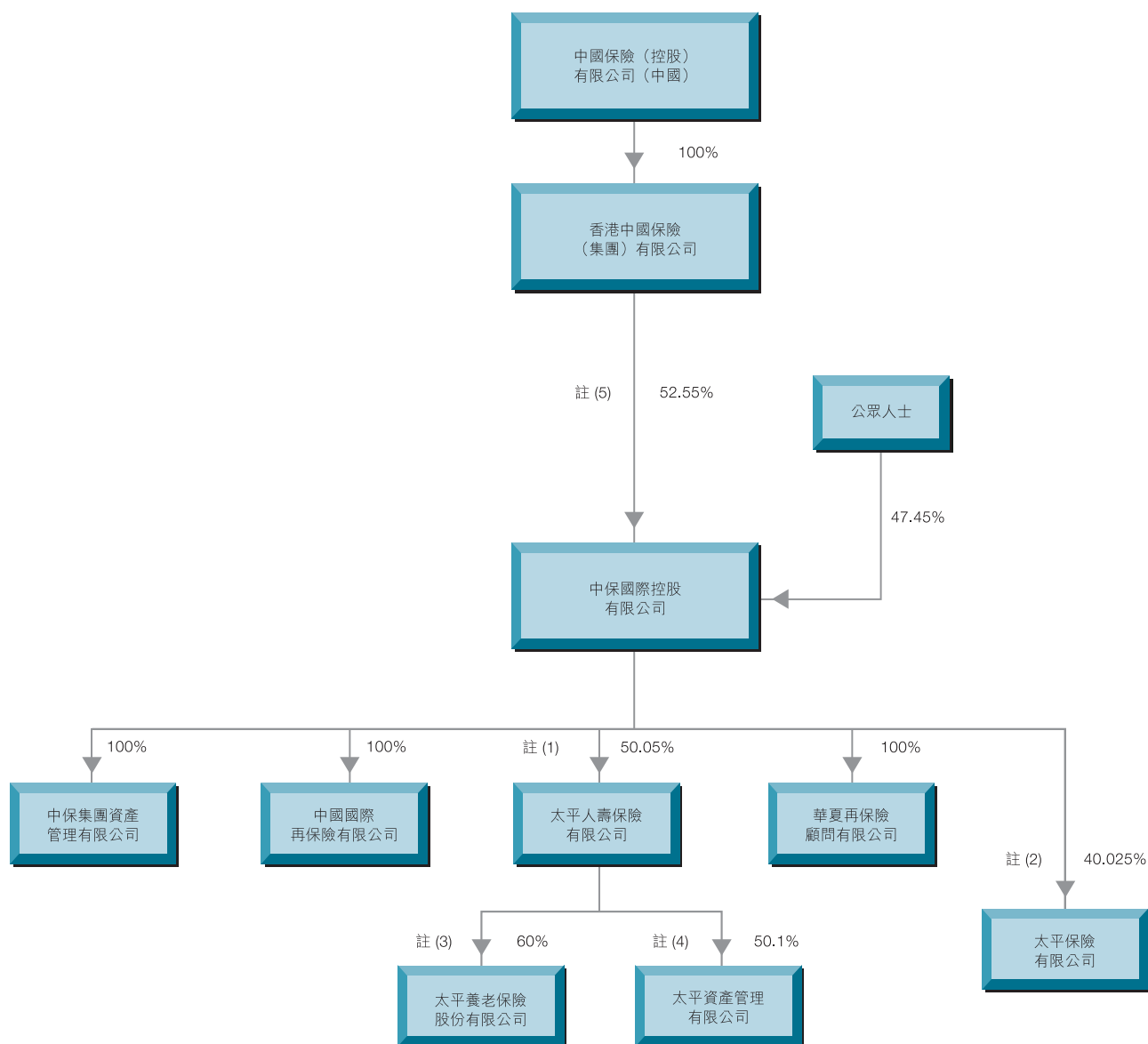
Note (3): Together with the 14% equity interest held by CIGAML, the Group's effective interest in TPP is 44.03%. TPI, CIHC and Fortis own the remaining 12%, 4% and 10% equity interests in TPP, respectively.

Note (4): Together with the 12% equity interest held by CIGAML, the Group's effective interest in TPAM is 37.08%. TPI, CIHC and Fortis own the remaining 9.9%, 20% and 8% equity interests in TPAM, respectively.

Note (5): According to the latest notice of substantial shareholders filed on 12 February 2008, CIHC owns a 54.029% equity interest in the Company as at 12 February 2008.

(As at 31 December 2007)

# 公司架構



註(1)：中保控股及富通分別持有太平人壽其餘之25.05%及24.90%權益。

註(2)：中保控股及工銀(亞洲)分別持有太平保險其餘之50.398%及9.577%權益。

註(3)：連同中保資產管理所持有之14%權益，本集團在太平養老之有效權益為44.03%。太平保險、中保控股及富通分別持有太平養老其餘之12%、4%及10%權益。

註(4)：連同中保資產管理所持有之12%權益，本集團在太平資產管理之有效權益為37.08%。太平保險、中保控股及富通分別持有太平資產管理其餘之9.9%、20%及8%權益。

註(5)：根據二零零八年二月十二日主要股東的申報，截至二零零八年二月十二日，中保控股持有本公司之54.029%權益。

(截至二零零七年十二月三十一日)