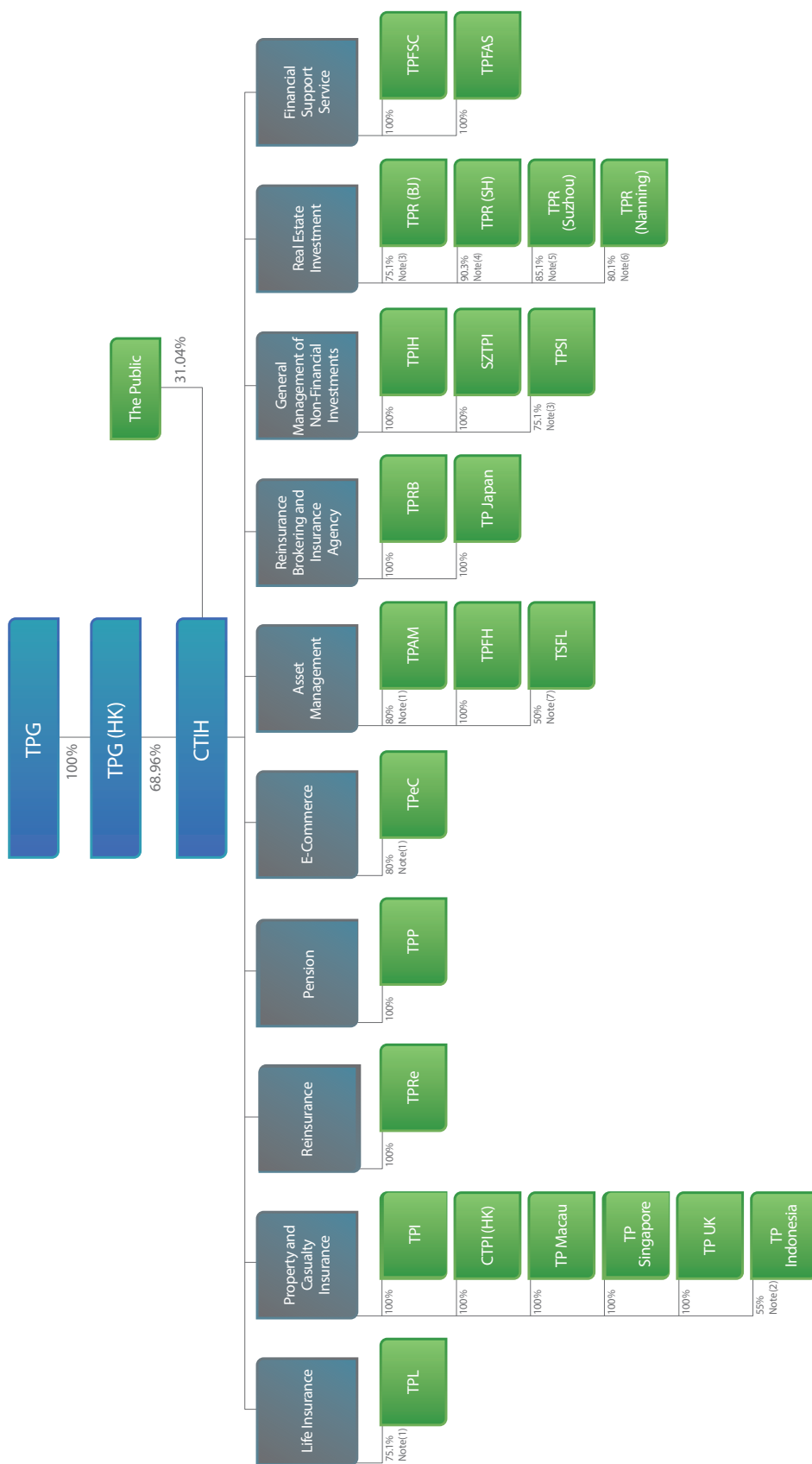


Simplified Ownership Structure



Note (1) : Ageas owns the remaining 24.9%, 20% and 20% equity interests in TPL, TPeC and TPAM, respectively.

Note (2) : PT Megah Putra Manunggal owns the remaining 45% equity interest in TP Indonesia.

Note (3) : TPSI and TPR (BJ) are wholly-owned subsidiaries of TPL. CTIH's effective interest in TPSI and TPR (BJ) is 75.1%.

Note (4) : TPIH and TPL own 61% and 39% of the equity interests of TPR (SH), respectively. CTIH's effective interest in TPR (SH) is 90.3%.

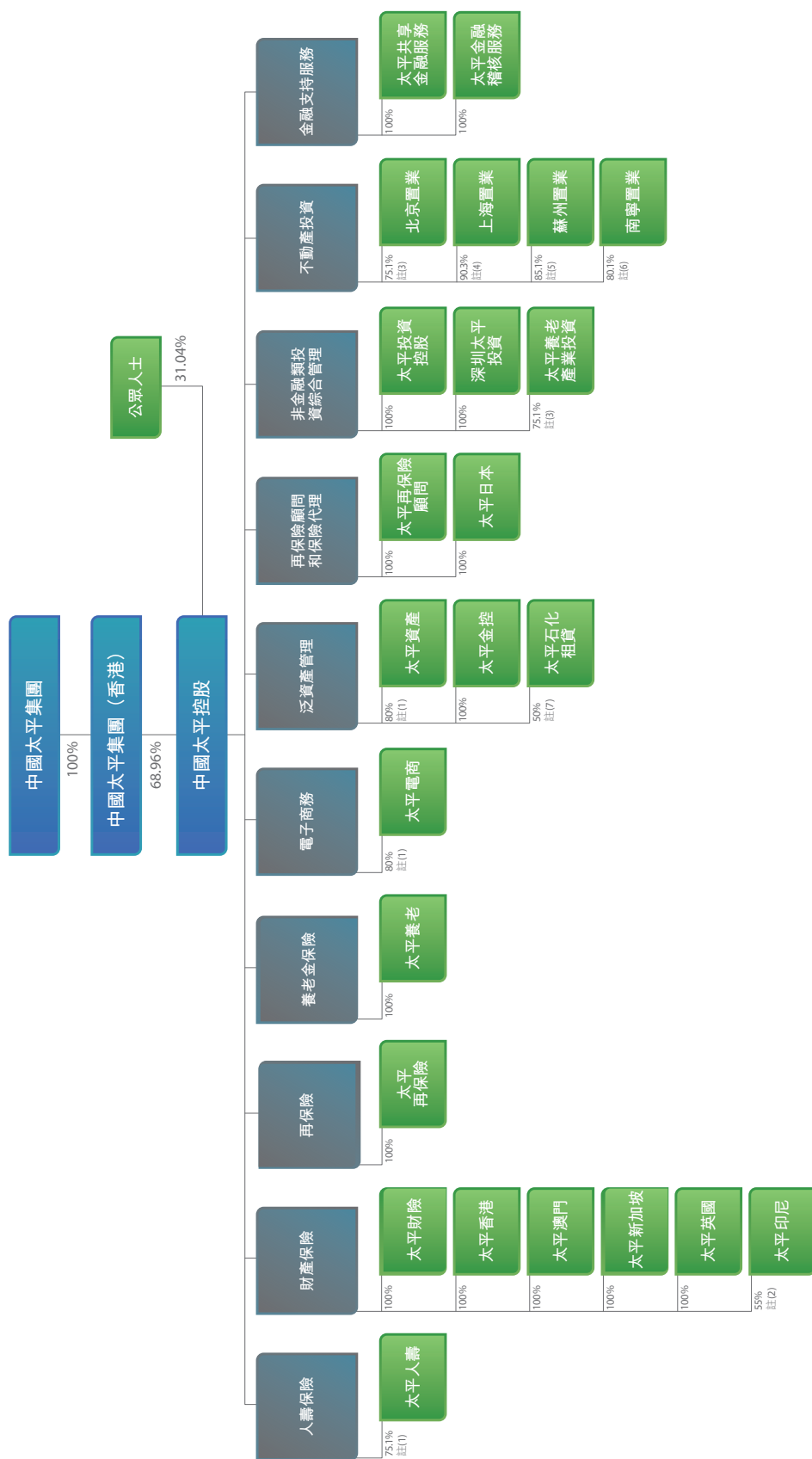
Note (5) : TPL, TPI and SZTPI own 60%, 20% and 20% of the equity interests in TPR (Suzhou), respectively. CTIH's effective interest in TPR (Suzhou) is 85.1%.

Note (6) : TPL and TPI own 80% and 20% of the equity interests in TPR (Nanning), respectively. CTIH's effective interest in TPR (Nanning) is 80.1%.

Note (7) : Sinopec Group Company owns the remaining 50% equity interests in TSFL.

(As at 31 December 2014)

簡明公司架構



註 (1)：富傑分別持有太平人壽、太平電商及太平資產其餘之24.9%、20%及20%權益。

註 (2)：PT Megah Putra Manunggal持有太平印尼其餘之45%權益。

註 (3)：太平養老產業投資及北京置業均為太平人壽的全資附屬公司。中國太平控股于太平養老產業投資及北京置業的有效權益為75.1%。

註 (4)：太平投資控股及太平人壽分別持有上海置業61%及39%權益。中國太平控股於上海置業的有效權益為90.3%。

註 (5)：太平人壽、太平財險及深圳太平投資分別持有蘇州置業60%、20%及20%權益。中國太平控股于蘇州置業的有效權益為85.1%。

註 (6)：太平人壽及太平財險分別持有南寧置業80%及20%權益。中國太平控股于南寧置業的有效權益為80.1%。

註 (7)：中石化集團公司持有太平石化租賃其餘之50%權益。