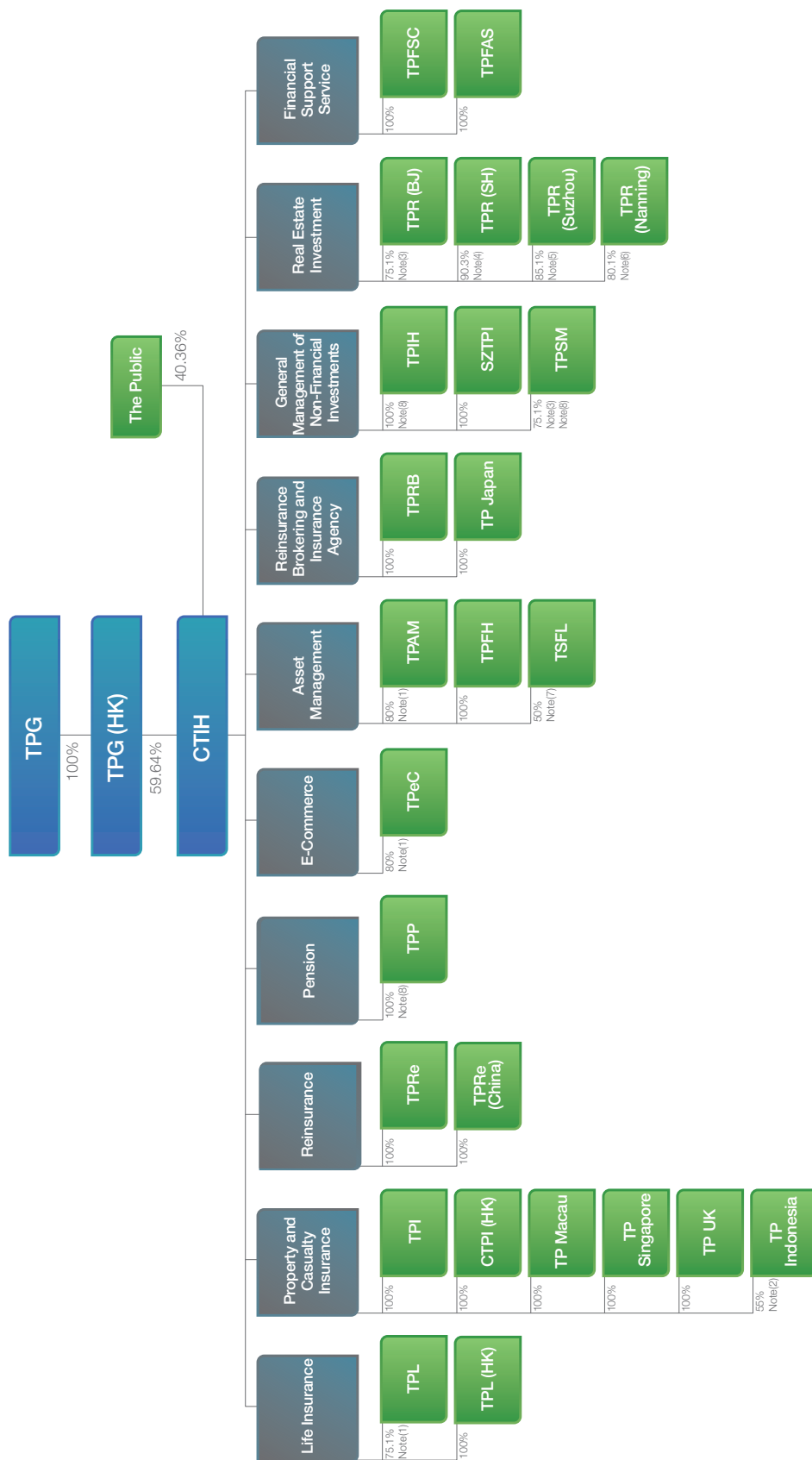


# Simplified Ownership Structure



Note (1) : Ageas owns the remaining 24.9%, 20% and 20% equity interests in TPL, TPeC and TPAM, respectively.

Note (2) : PT Megah Putra Manunggal owns the remaining 45% equity interest in TP Indonesia.

Note (3) : TPSM and TPR (BU) are wholly-owned subsidiaries of TPL. CTIH's effective interest in TPSM and TPR (BU) is 75.1%.

Note (4) : TPIH and TPL own 61% and 39% of the equity interests of TPR (SH), respectively. CTIH's effective interest in TPR (SH) is 90.3%.

Note (5) : TPL, TPI and TPPM own 60%, 20% and 20% of the equity interests in TPR (Suzhou), respectively. CTIH's effective interest in TPR (Suzhou) is 85.1%.

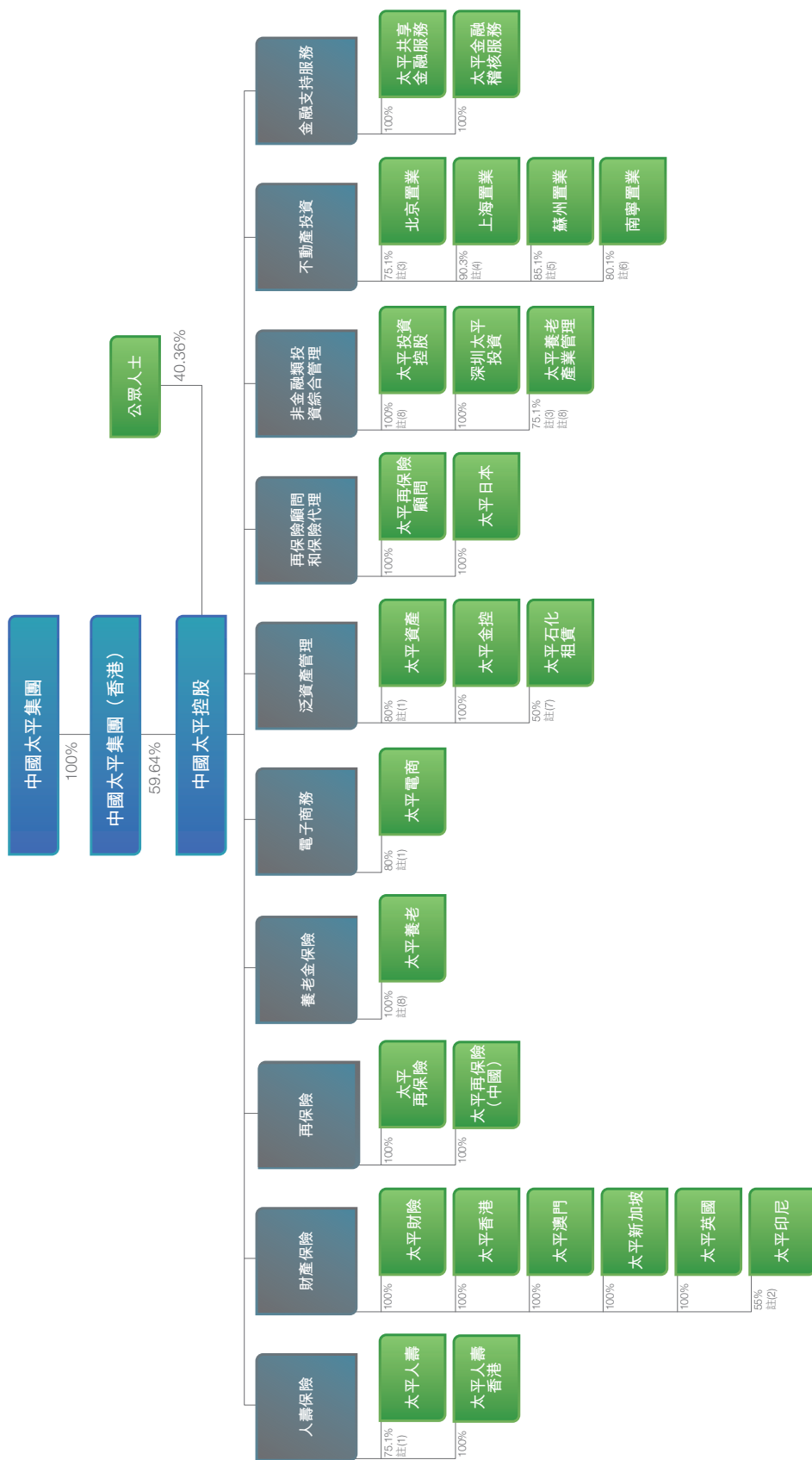
Note (6) : TPL and TPI own 80% and 20% of the equity interests in TPR (Nanning), respectively. CTIH's effective interest in TPR (Nanning) is 80.1%.

Note (7) : Sinopec Group Company owns the remaining 50% equity interests in TSFL.

Note (8) : In addition to operating its own business lines, TPIH, TPSM and TPR also act as investment platforms in the asset management business.

(As at 31 December 2016)

# 簡明公司架構



註 (1)：富傑分別持有太平人壽、太平電商及太平資產其餘之24.9%、20%及20%權益。  
 註 (2)：PT Megah Putra Manunggal持有太平印尼其餘之45%權益。  
 註 (3)：太平養老產業管理及北京置業均為太平人壽的全資附屬公司。中國太平控股於太平養老產業管理及北京置業的有效權益為75.1%。  
 註 (4)：太平投資控股及太平人壽分別持有上海置業61%及39%權益。中國太平控股於上海置業的有效權益為90.3%。  
 註 (5)：太平人壽、太平財險及太平物業分別持有蘇州置業60%、20%及20%權益。中國太平控股於蘇州置業的有效權益為85.1%。  
 註 (6)：太平人壽及太平財險分別持有南寧置業80%及20%權益。中國太平控股於南寧置業的有效權益為80.1%。  
 註 (7)：中石化集團公司持有太平石化租賃其餘之50%權益。  
 註 (8)：太平投資控股、太平養管和太平養老除經營各自條線的業務外，同時亦為泛資產管理線條的投資平台。